

## PAVING SURFACES



**Public Pathway**  
Resin bound gravel SureSet Natural aggregate color ref 6mm Butter-scotch 18mm deep on permeable sub-base open graded asphalt min 70mm deep BS EN13108-1:2006. Sub-base: A 175mm minimum depth of well compacted Type 3 granular sub-base to SHW clause 805 or



**PLAYGROUND SURFACING: \*P**  
Edpm sureset playbond wet pour play rubber surface on permeable sub base by sureset or ea. Colour 3mm egg shell. & 3mm earth yellow

Min 100mm depth mat on geotextile membrane varies depending on fall distance. Edging aluexcl by kinsley as required or natural stone Kerb boarder as per specific edge detail requirement.

Rill for water pump play feature in pigmented moulded concrete using selected sand to mimic coastal boulders at balscadden bay.



B+C+D+E

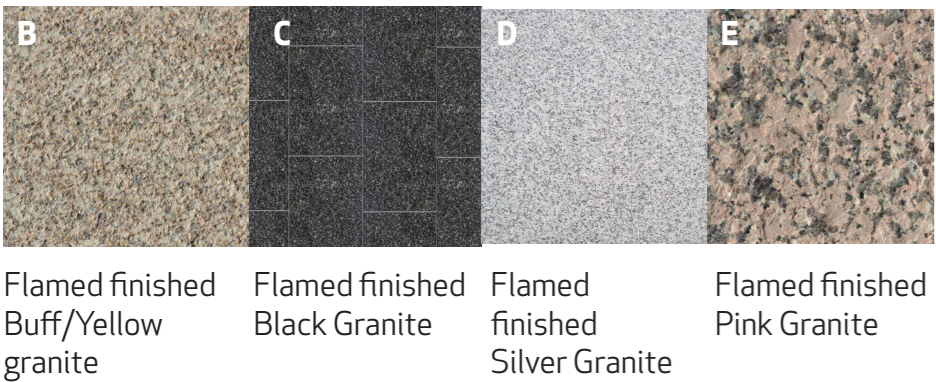
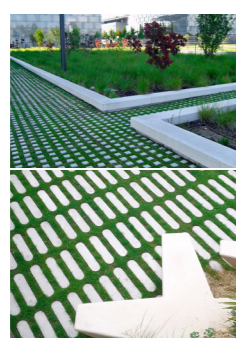
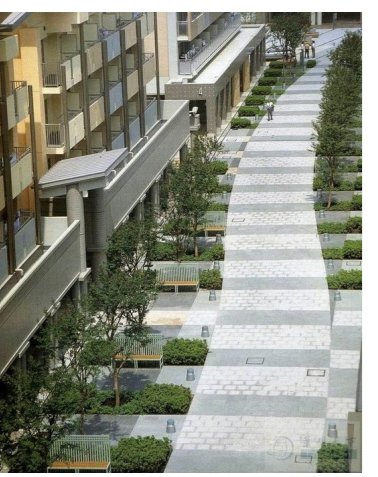
B+C+D+E

**Paving**  
Street and public realm and semi public areas:

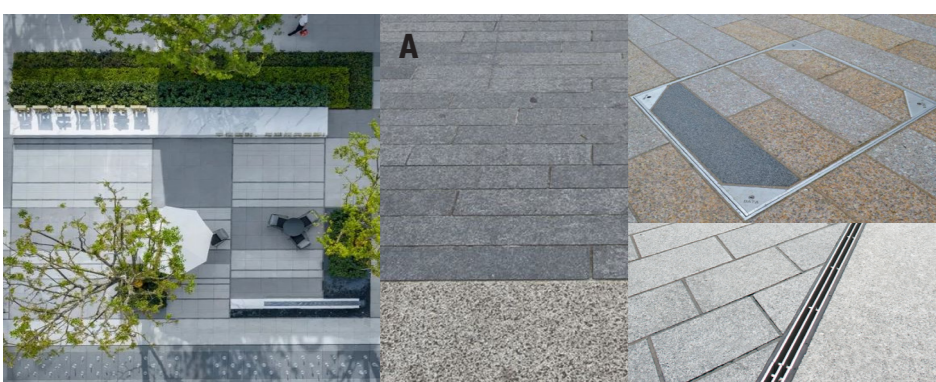
**B,C,D,E.** Buff yellow, pink, silver grey and black granite flamed finished mixed unit sizes: 700x500, 400x500, 300x500, 200x250, 200x600, 200x300, 200 by 80mm deep vehicular zones and 40mm for pedestrian zones. Sets for buff, pink silver grey and black granite dimension 100x100x80mm 60x60x80mm flamed finished top sawn all others.

**A** -Limestone paving units Kilkenny blue limestone sizes 200x600, 200x300mm x 40mm deep. Silver grey granite banding 700x500, 400x500. Flamed finished. Sets 100x100x80 flamed finished top. Kilkenny blue limestone.

**G** Escofet Redes & Checkerboard reinforced concrete cast stone grid paving system for semi vegetated grass system where light and occasional vehicular access required to substations



Flamed finished Buff/Yellow granite  
Flamed finished Black Granite  
Flamed finished Silver Granite  
Flamed finished Pink Granite



Flamed finished Kilkenny limestone sculpture garden

Aco brick slot drainage channels through out hard landscape paved areas with recessed access chambers. Recessed manhole covers by Kent Steel or E/A ref KSP-450/450

Kerbs: Flush granite kerbs to soft beds, transition from paving types and edge kerbs to development entrance. 300x250 deep, flamed finished top. Bullnose where required if level differences arise. For planter beds 100mm x250mm kerb flush flamed finished top face. Curved kerbs not faceted specials required to radii. Colour from B/C/D/E depending on local paving pattern.

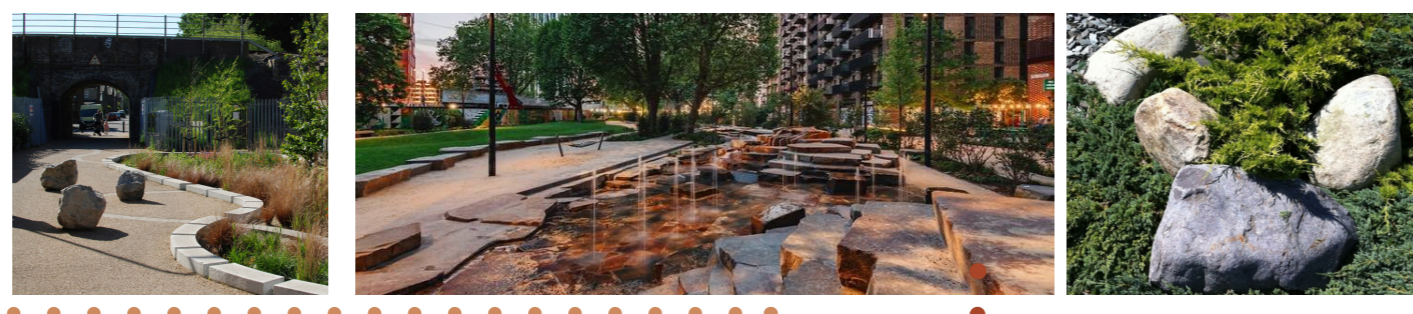
### WAYFINDING / PUBLIC COASTAL PANORAMA

#### Wayfinding / Observation Lookout

- S1 Totem Eudald I by Cyria or E/A 6no.
- S2 Totem Eudald II by Cyria or E/A 4no.
- S3 Omeagon Sightseeing telescope Bonview 20x100 Ino. Colour silver or as selected by LA Ino. \*see key plan for locations



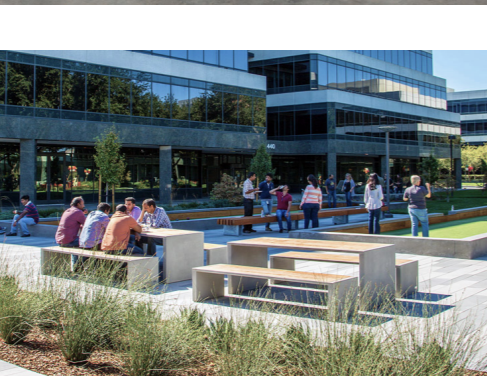
## LANDSCAPE FEATURES



### Play



## STREET FURNITURE

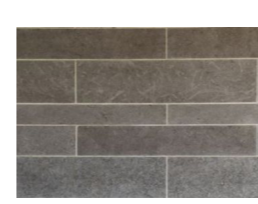


#### PUBLIC REALM FURNITURE

- F1 Escofet Petra S and L 4 No. S & 3no. L)
- F2 Castle tree grill CASTLE18A 1800x1800mm 5no. with Tree Guard 5no. with powder coated SKOP tree guard by Factory Furniture or E/A. Gravel mulch at base Ballylusk gravel 6mm.
- F3 Escofet Marina Bench, table and 3 no stools 5no. sets
- F4 Security Line automatic bollards with stone mantle Hörman 4no.
- F5 MMCite bicycle stand Edgetyre 36no. or E/A.
- F6 Pysa Chair by Cyria or E/A 12no.
- F7 Mat 6no. RAL 7016 by STREET-PARK or E/A
- F8 Escofet Concret table and chairs (14no. chairs 7 no tables) or E/A
- F9 Bench LINET1 - UrbastyleU-Finish US -FINO - 00003-018 & US -FINO - 00012-034 6no. or E/A
- F10 Amop Synergies Amoplay Ping Pong Table

\*see key plan for locations

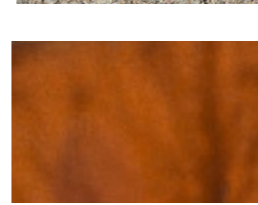
## Retaining walls cladding



Blue limestone to retaining walls 'sculpture garden area to match paving pattern, polished finish. 40mm thick with mechanical fixings to stone suppliers specification.



Buff granite cladding mechanically fixed to stone suppliers specification 40mm thick. Finish polished. Cladding tile dimensions to match paving pattern. Coping 40mm thick bull nose arise two sides. No facets specials required on curved profile coping.



Proposed low retaining walls to Balscadden Bay to receive corten steel clad masonry wall with mechanical fixings integrating LED architectural lighting. Bespoke detail by specialist steel fabricator.

Landscape Boulder features set in landscape art water feature and planted zone of geological cultural reference to Howth which has the potential to act as a storm water channel:  
Quartzite, Calp Limestone, Limestone, of varying sizes from circa 600x600, 1.5mx800, 400x500.  
Some used within water feature and sawn to create water-

### SHELTER/ ENTRANCE/ PLANTED PERGOLA



A bespoke entrance pergola to the north contains visitor and public bicycle parking under a planted canopy with a bespoke illuminated gate for pedestrian access for residents and visitors. Through views to the formal bowling lawn is proposed. A feature steel structure pergola within the central courtyard of steel with partial glazed canopy. Here workspace / external dining overlooks the amenity games



#### OLDER CHILDRENS PLAYGROUND:

- Kompan Nature Play Range:
- Balance Posts with Rope ref NRO821 Ino. item
- Hammock ref NRO815 2no. item
- Crawling Pyramid 1 No. ref NRO826-0801
- Climbing net brown Ino. unit ref NRO813-1011
- Balance Posts with Rope NRO821-0901

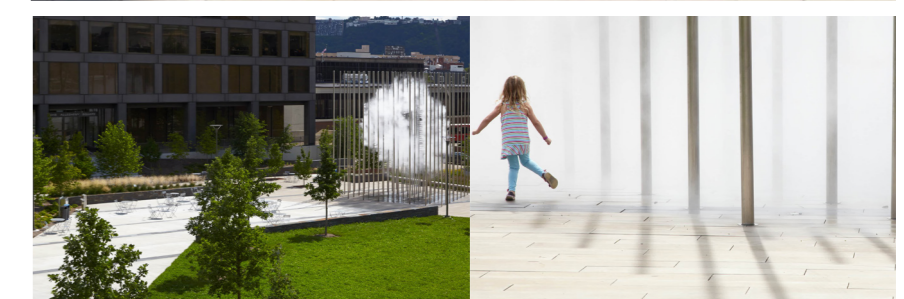
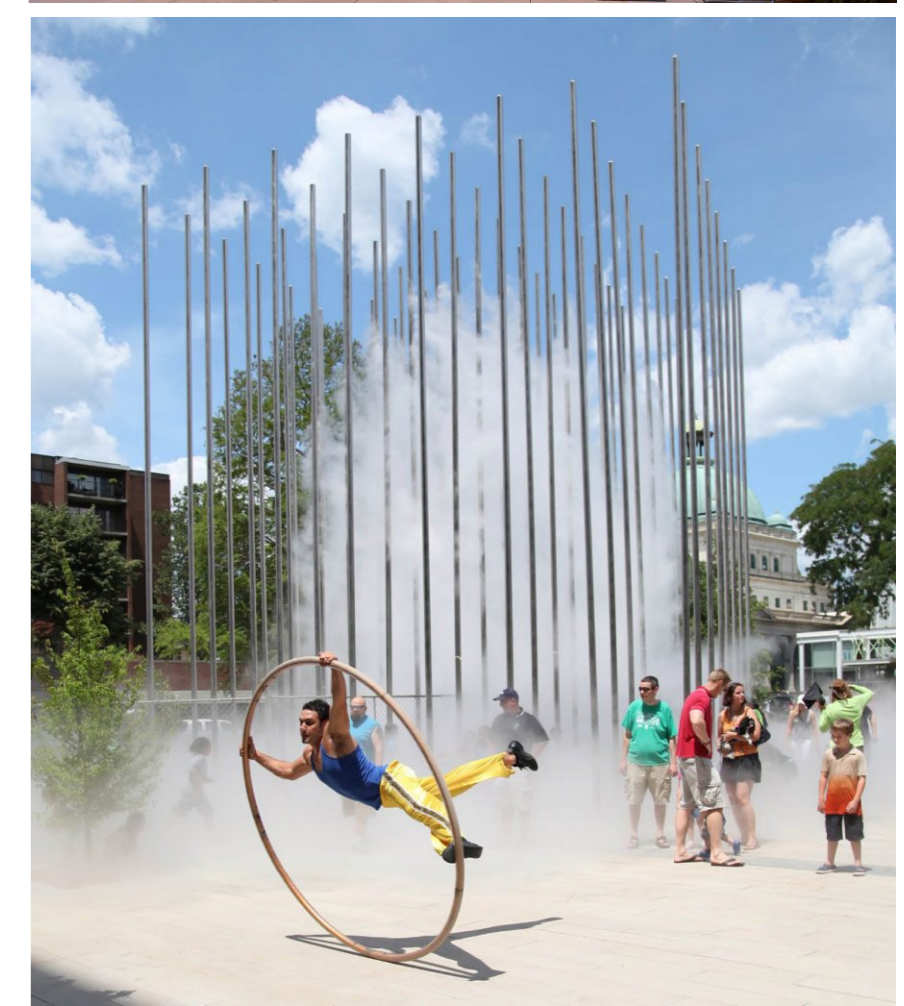
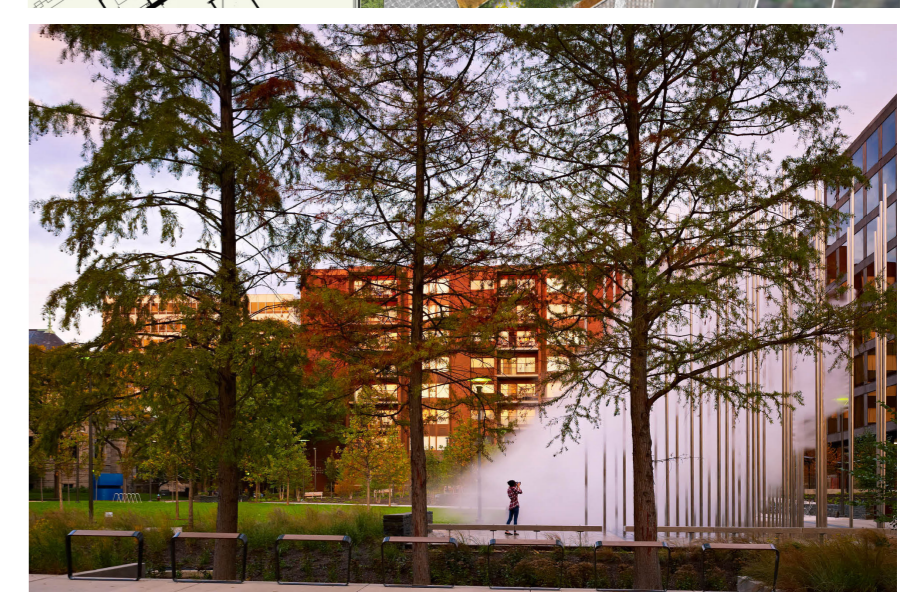
#### JUNIOR PLAYGROUND 0-6:

- Play Den Teepee NO.2 Duncan and Grove or E/A Ino. item
- Planter Bench / Sand pit Lab23 Aveno or EA Ino. item
- Amop Synergies Amoplay sand table & Play bench 3no.

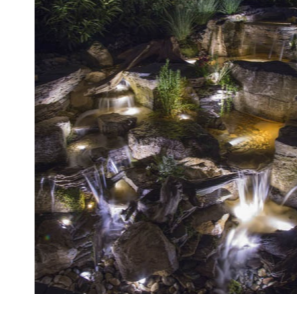
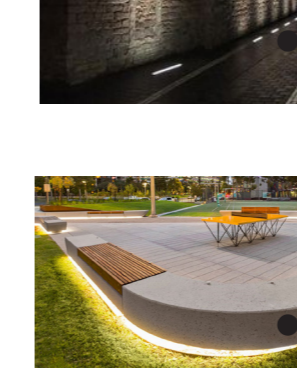
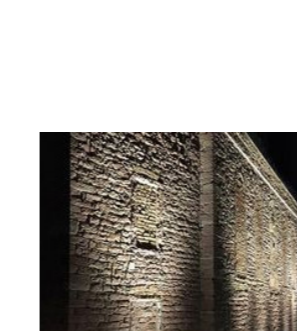
#### Kompan A Nature Play Range:

- Angles Water migrant with pump, splash table ref NRO508-0601 Ino. item or EA
- Spinner plate with handles NRO110-0901 Ino. unit or EA
- Doubleseat Springer Surface

**PUBLIC ART:**  
Public art feature referencing the local maritime, geological and historical cultural setting in agreement with Fingal County Council Arts officer. Below example by Ned Kahn collaboration with ACLA at Buhl Community Park inspired by the cultural setting where a grid of 64 stainless steel poles that emit fog with water fed from the steam heating system of Pittsburgh.



## LIGHTING

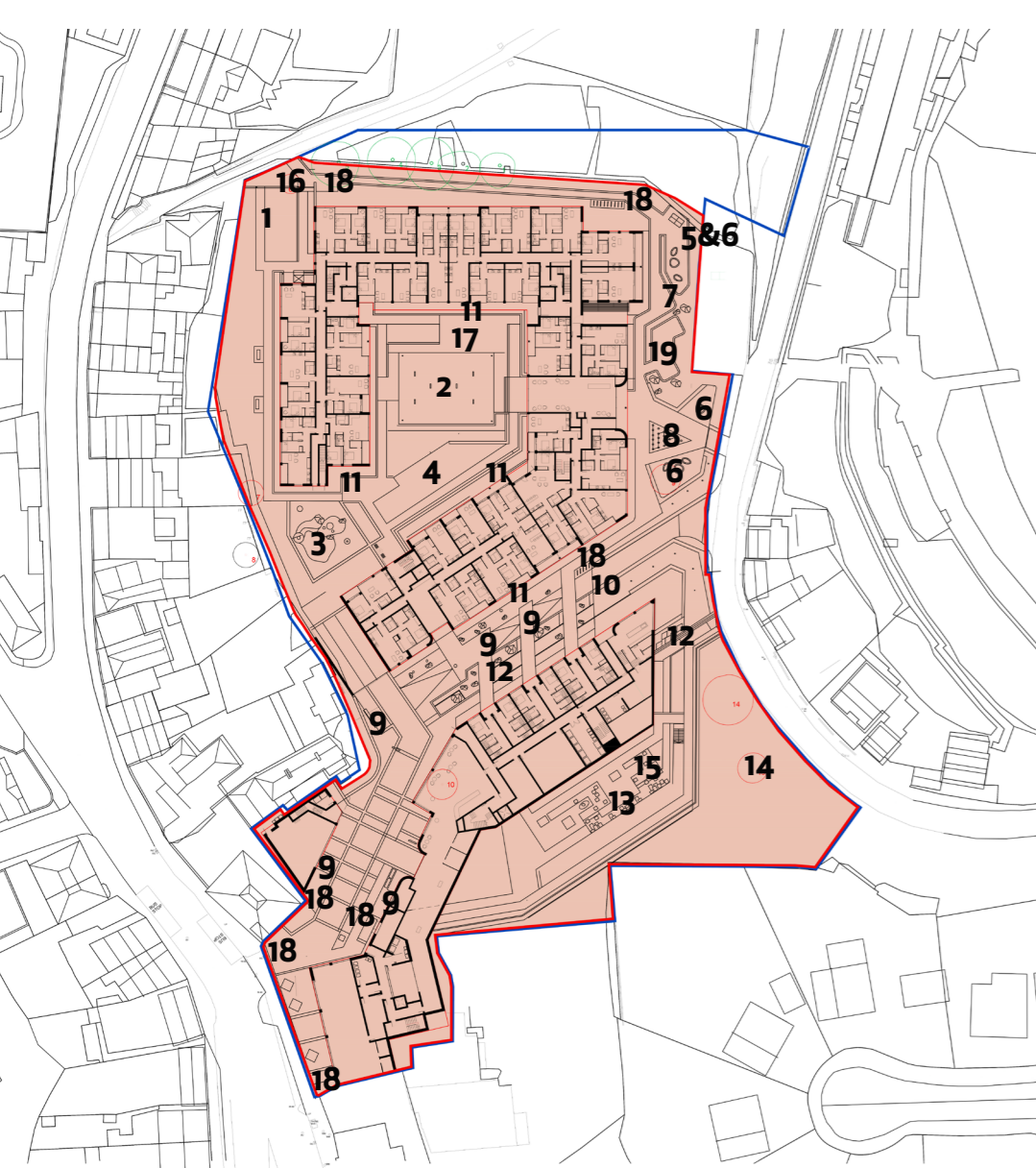
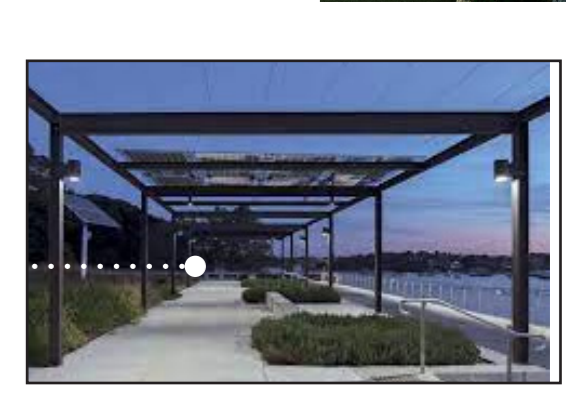
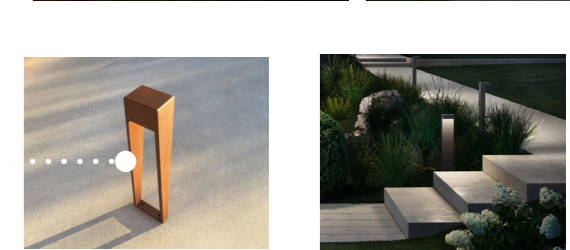
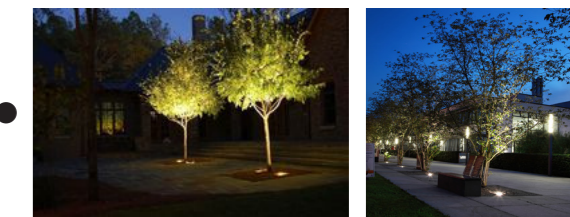


#### Public lighting

- Escofet Ball light with double, alternate or building mounted. Soft white LED luminaire. or E/A
- Landscape architectural lighting
- Bega inground tree uplighters 2 per street tree / public realm tree, feature trees in semi public areas for 50no trees, and to uplight Escofet petra features as well as all seating furniture bays ref Bega inground luminaire 7177 K3 stainless steel adjustable lens warm white light or E/A
- Lyx Pathway light BNL 900 corten colour finish or E/A public realm 50no.
- Bega step and path luminaire within soft landscape areas 50no. or E/A semi public area. Colour graphite ref 84 218 K3 soft white luminaire.
- Bega building facade uplighting as required ref 77001 K4 soft white light
- Bespoke entrance canopy and courtyard canopy with integrated luminaires on lighting poles / downlit to M&E specification.
- LiniLED Aeris concealed linear lighting to underlighting to all public furniture benches, courtyard benches.
- Waterfeature lighting elements submersible IP rating to M&E waterfeature specialist.
- 33 880 K3 Recessed luminaire steps / inclined surfaces. Bega or E/A 30no or as required.
- 24 063 K3 Bega or E/A recessed wall mounted lighting raised planters as required to illuminate pathways in semi public open space.

All lighting in accordance with BCT Lighting Guidelines (BCT, 2018):

- All luminaires used should lack UV/IR elements to reduce impact.
- LED luminaires should be used due to the fact that they are highly directional, lower intensity, good colour rendition and dimming capability.
- A warm white spectrum (<2700 Kelvins should be used to reduce the blue light component of the LED spectrum).
- Luminaires should feature peak wavelengths higher than 550nm to avoid the component of light most disturbing to bats.
- Column heights should be carefully considered to minimise light spill. The shortest column height allowed should be used where possible.
- Only luminaires with an upward light ratio of 0% and with good optical control should be used.
- Luminaires should be mounted on the horizontal, i.e. no upward tilt.
- Any external security lighting should be set on motion-sensors and short (1min) timers.



- KEY**
1. Amenity & Games Lawn (Boules)
  2. Amenity & Games Lawn (Croquet)
  3. Junior playground
  4. Older childrens playground
  5. Pingpong table
  6. Public seating observation area
  7. Observation terrace over Balscadden Bay
  8. Public Art Sculpture
  9. Public open space seating
  10. Public street
  11. Privacy & amenity planting
  12. Public art water feature
  13. Sculpture garden
  14. Embankment
  15. Waterfeature
  16. Entrance gate/ pergola
  17. Pergola
  18. Bicycle parking bays
  19. Picnic area